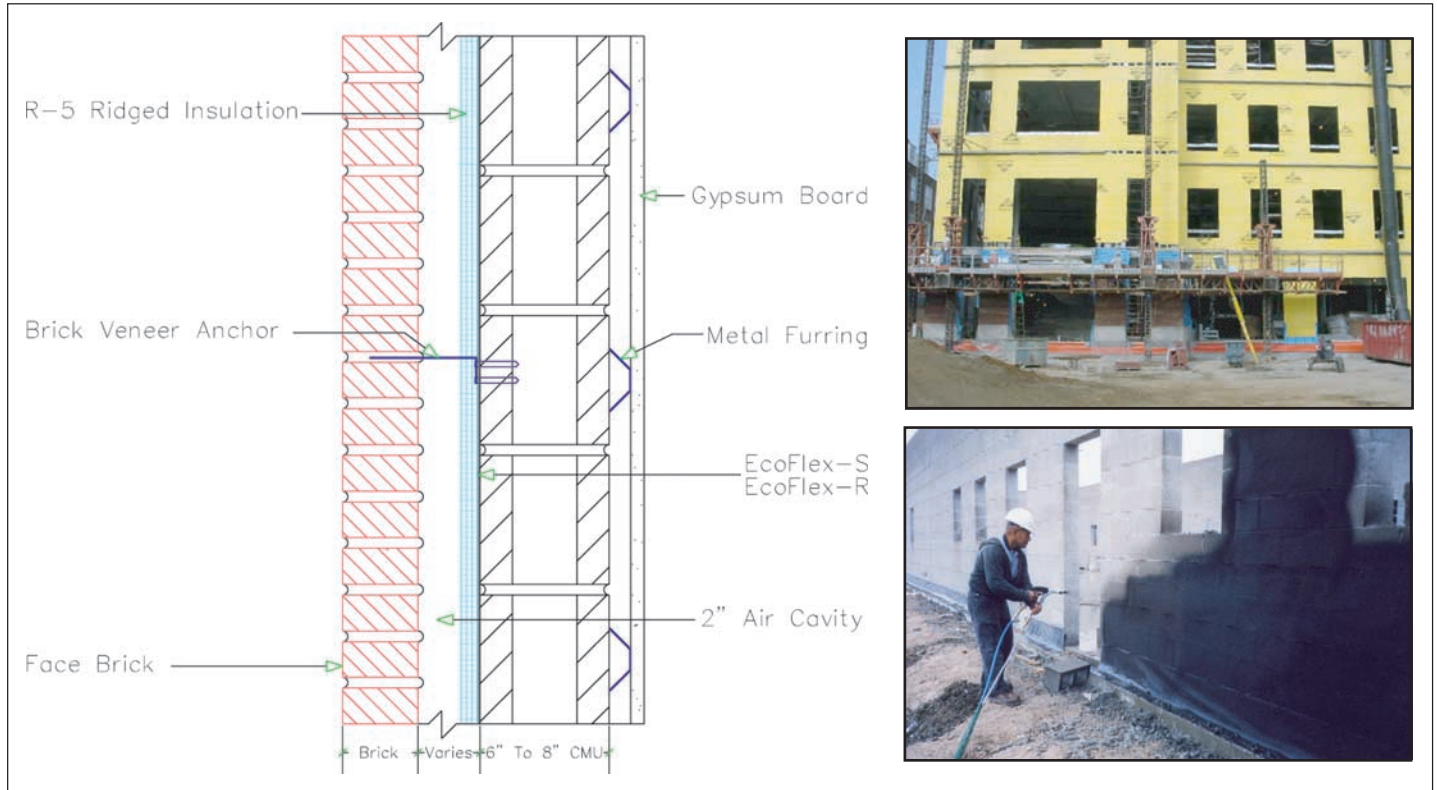


# System III-Air Barrier

## Division 7

### ABOVE GRADE CAVITY WALLS



#### Features:

- Excellent air vapor and moisture control through high performance monolithic membrane.
- System versatility – Ecoflex can be applied to a wide range of substrates (concrete, CMU, block, ICF, wood, dense glass, etc.) on the positive or negative side.
- Cost effective – The material costs and installation speed make this a high value, quality and performance solution.
- No seam failures – The highly flexible spray applied or fluid applied monolithic membrane bonds tenaciously to almost any substrate and in almost any condition including green concrete and damp block.
- Problem prevention – Along with its excellent elongation and recovery properties, Ecoflex is self sealing thus, preventing any air leakage due to minor penetrations and cracking caused by building movement and shrinkage.

### A SYSTEMIZED APPROACH TO MOISTURE PROTECTION

**EPRO SERVICES**  
P.O. Box 347  
Derby, KS 67037 USA



Phone: 800-882-1896  
316-262-2513  
Fax: 316-262-2529

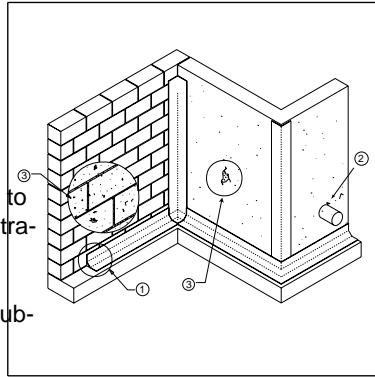
# SYSTEM III-AB Air Barrier

## The Components:

### DETAIL MEMBRANE ECOFLEX-F

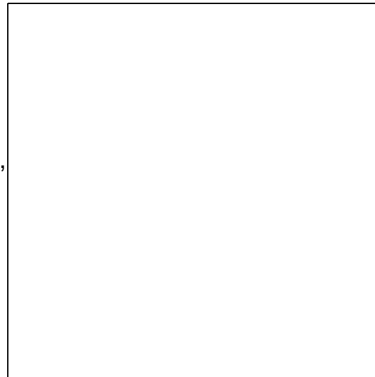
A self adhering 40-mil sheet membrane used to detail around openings, plane changes, penetrations and cracks.

For best results use Epro Primer to prepare substrate prior to installation.



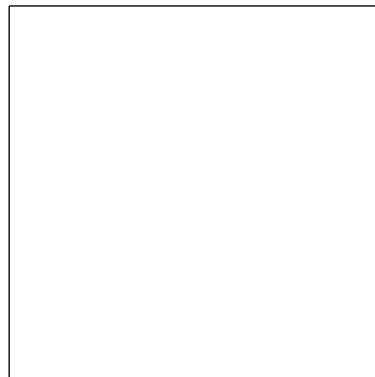
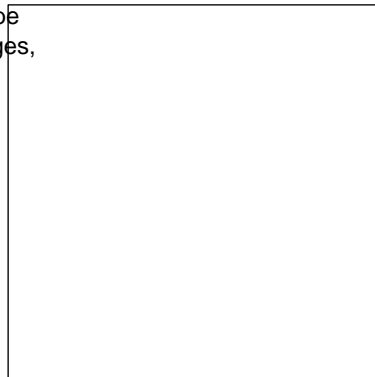
### FIELD MEMBRANE ECOFLEX-S or R

A spray or fluid applied, exceptionally flexible, monolithic membrane.



### OPTIONAL DETAIL MEMBRANE ECOLINE-R

With polyester reinforcement fabric may also be used to detail around openings, plane changes, penetrations and cracks.



## The Installation Steps:

### Step 1-Detailing

¥ Treat all cold joints, substrate changes, penetrations, door and window openings with self adhering Ecoflex-F or Ecoflex-R and polyester mesh.

### Step 2-Air Barrier Membrane

¥ Begin the application of ECOFLEX-S from the bottom to the top. Always applying to the footer first.

\*Spray application should be done in 4 ft. x 4 ft. passes to a 20-mil build on each pass.

### Step 2 Ⓟ OPTIONAL Air Barrier Membrane

¥ ECOFLEX-R may be applied by roller, brush or sprayer to a 40-mil build. Apply two 30-mil coats to achieve a 40-mil finish coat.

## SYSTEM III-AB

A System Designed for cost effective protection

