

System III

MOISTURE BARRIER BENEATH SLAB WATERPROOFING

Division 7

THREE BARRIERS IN ONE TOUGH COMPOSITE SYSTEM



Features:

- **Excellent Tensile Strength** – The result of the unique field installed Composite Design.
- **Cost Effective** – The material costs and installation-speed make this a high value, quality, and performance solution.
- **Seamless Installation** – Fluid applied component makes the transition detailing and field a seamless installation.
- **Fully Bonded With Slab** – The geotextile surface of the barrier mechanically interlocks with the concrete slab to form a permanent bond between the barrier and the slab.
- **Redundant Protection** – Multiple waterproofing barriers and protection courses.

Approvals: City of Los Angeles
Research Report #25478 for waterproofing.

EPRO SERVICES
P.O. Box 347
Derby, KS 67037 USA



Toll-free: 800-882-1896
Phone: 316-262-2513
Fax: 316-262-2529

www.eproserv.com

SYSTEM III-Moisture Barrier

THE COMPONENTS:

BASE MEMBRANE – ECOSHIELD-P

An extremely tough, non-degrading laminated sheet good that comes in 10'x200' rolls for easy installation with a minimum of seams that provides a substrate for the liquid membrane.

MIDDLE MEMBRANE – ECOLINE-S

A spray-applied, high-build, exceptionally flexible, monolithic membrane that is the pliable, bonding gasket in the system.

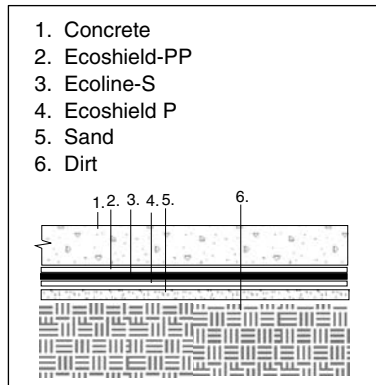
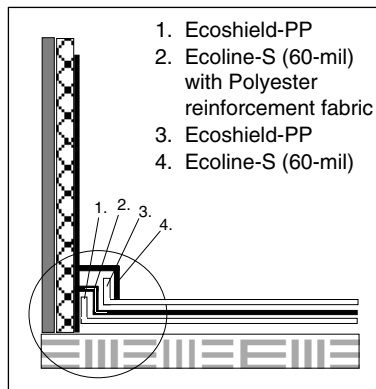
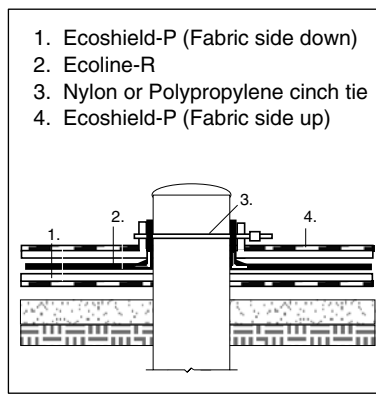
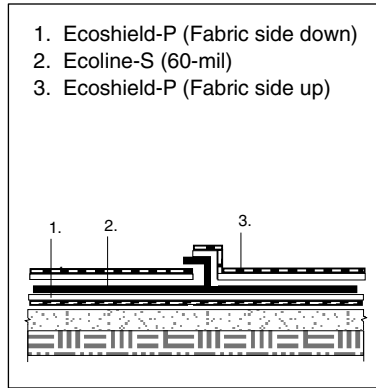
TOP MEMBRANE – ECOSHIELD-PP

A puncture and abrasion resistant fabric and film laminate that protects the other components from other construction damage and bonds to the concrete slab.

SYSTEM III-Moisture Barrier: A SYSTEM DESIGNED FOR MAXIMUM PROTECTION

A.) Ecoshield-P or PP

B.) Ecoline-S



THE INSTALLATION STEPS:

Step 1. – BASE BARRIER

- Lay ECOSHIELD in one direction with six-inch overlaps.
- Treat both sides of overlap with ECO-LINE-S or ECOLINE-R and compress with a roller.

Step 2. – DETAILING

- Treat all penetrations by applying a base coat of ECOLINE-S or ECOLINE-R in a 6-inch radius on the substrate around the penetration and 6-inches up on the penetrating object.
- Embed the polyester fabric into the base coat and apply a second coat of ECOLINE-S or ECOLINE-R, ensuring the fabric is completely saturated and covered.

Step 3. – MIDDLE BARRIER

- Begin spray application of ECOLINE-S from the lowest point on horizontal plane.
- Spray application pattern should be in 4'x4' passes to achieve desired millage.

Step 4. – TOP BARRIER

- Lay ECOSHIELD in opposite direction of the base membrane installation.
- Treat overlaps in same fashion as base course.
- Terminate to exterior perimeter substrate by turning a six-inch flap up and applying ECOLINE-S or ECOLINE-R to the flap and substrate and then attaching a termination bar to the flap and substrate or apply a coat of ECOLINE-R 3" on each side of the seam and embed 6" polyester into this coat and apply a second coat of ECOLINE-R.