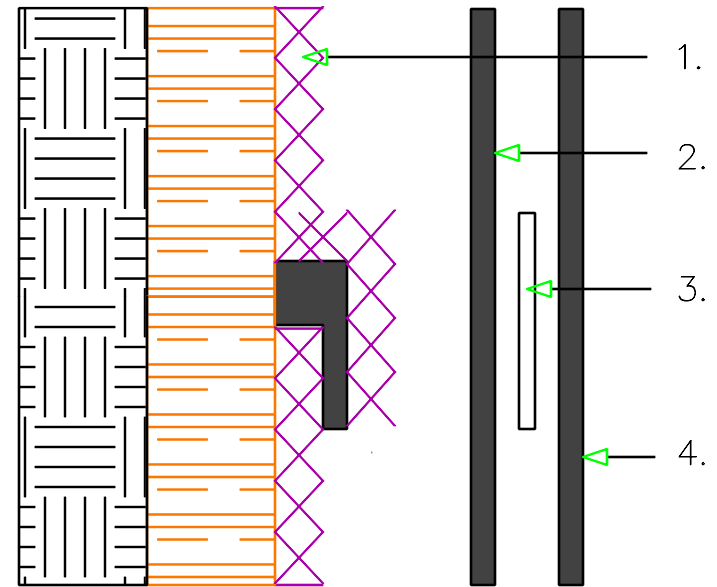


1. Ecodrain-E
2. 30-mil Ecoline-S or Ecoline-R
3. Polyester reinforcement fabric
4. 30-mil Ecoline-S or Ecoline-R

- A. Apply a 30-mil coat of Ecoline-S or Ecoline-R 6" to either side of the overlap seam.
- B. Embed a 6" strip of reinforcement fabric into the seam, extending out 3" on either side of the seam.
- C. Apply a second 30-mil coat of Ecoline-S or Ecoline-R over the polyester reinforcement fabric



LAGGING WALL  
DETAIL  
OVERLAP 2

**e**pro™  
Waterproofing Systems



LW-1