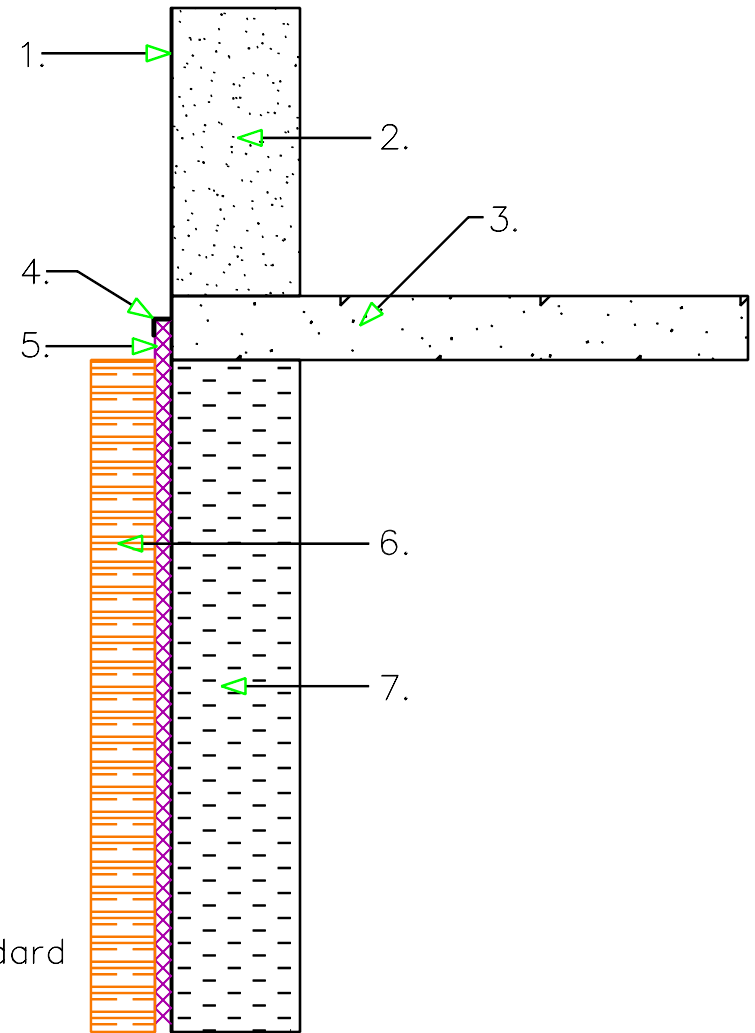


1. Ecoline-S (60-mil)
2. Concrete or block wall
3. Concrete slab
4. Termination bar
5. Ecodrain-E
6. Lagging wall
7. Shotcrete wall



- A. Install System III LW 6" above lagging wall.
- B. After slab is poured, trim System III LW to 3" Above the bottom of the slab.
- C. Apply a 30-mil coat of Ecoline-R in 3" area
- D. Attach System III LW with permanent termination bar
- E. Coat 3" on both sides of termination seam with 30-mil Ecoline-R
- F. Install 6" polyester reinforcement fabric overseam.
- G. Apply 30-mil coat Ecoline-R over polyester.
- H. Continue 60-mil Ecoline-S up slab and/or wall per standard application spec, including cold joint details

LAGGING WALL DETAIL
TERMINATION AT GRADE

eipro[™]
Waterproofing Systems



LW-10