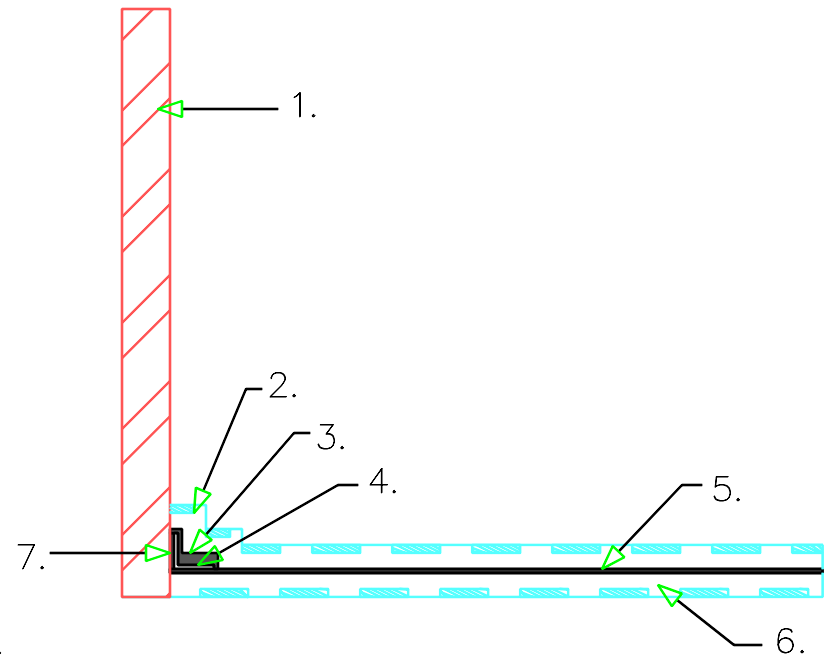


1. Interior soldier beam
2. Ecoshield-PP
3. Ecoline-R (30-mil)
4. Polyester reinforcement
5. Ecoline-S (60-mil)
6. Ecoshield-P
7. Ecoline-R (30-mil)

- A. Butt Ecoshield-P against all interior sides of soldier beams.
- B. Apply 30-mil coat of Ecoline-R 3" up soldier beam, 3" out on the Ecoshield-P.
- C. Embed 6" polyester reinforcement fabric into the Ecoline-R.
- D. Spray 60-mil Ecoline-S onto the Ecoshield-P
- E. Lay Ecoshield_PP onto the top of the Ecoline-S (fabric up). Extend 4"-6" up soldier beam sides.



LAGGING WALL DETAIL
 INTERIOR SOLDIER BEAM
 HORIZONTAL TIE IN



LW-11