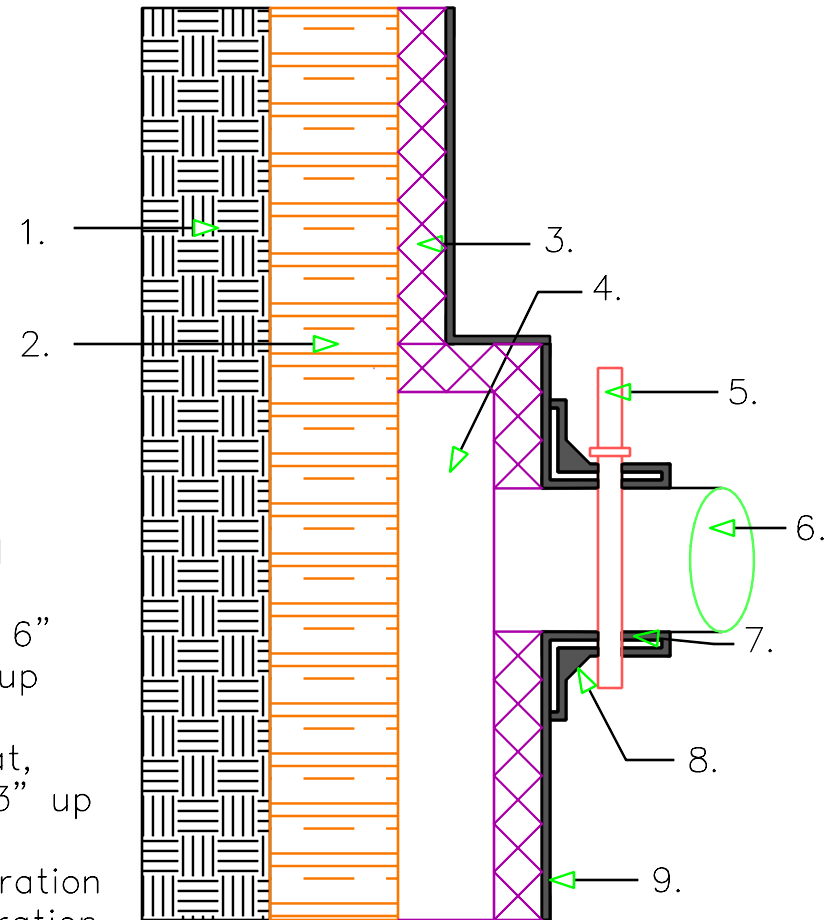


1. Soil
2. Lagging
3. Ecodrain-E
4. Ecodrain-DS 12" Tee Outlet Fitting
5. Nylon or Polypropylene cinch tie
6. Attach Drain Pipe
7. Ecoline-R
8. Ecoline-S (45° cant)
9. Ecoline-S (60 Mil)

- A. Trim the Ecodrain to within 1/8" of the drain pipe (should be as snug as possible).
- B. Apply a 30-mil base coat of Ecoline-S or Ecoline-R in a 6" radius on the Ecodrain-E, around the penetration and 6" up the penetrating object.
- C. Embed 6" polyester reinforcement fabric into the base coat, wrapping it around the penetration 3" onto the field and 3" up the penetration.
- D. Apply a minimum 60-mil coat around and onto the penetration while creating a 45 degree cant at the base of the penetration.
- E. Secure the membrane and reinforcement fabric with a nylon or polypropylene cinch tie.



<p style="text-align: center;">LAGGING WALL DETAIL FOOTING DRAIN OUT LET</p>	 	<p style="text-align: center;">LW-13</p>
--	--	--