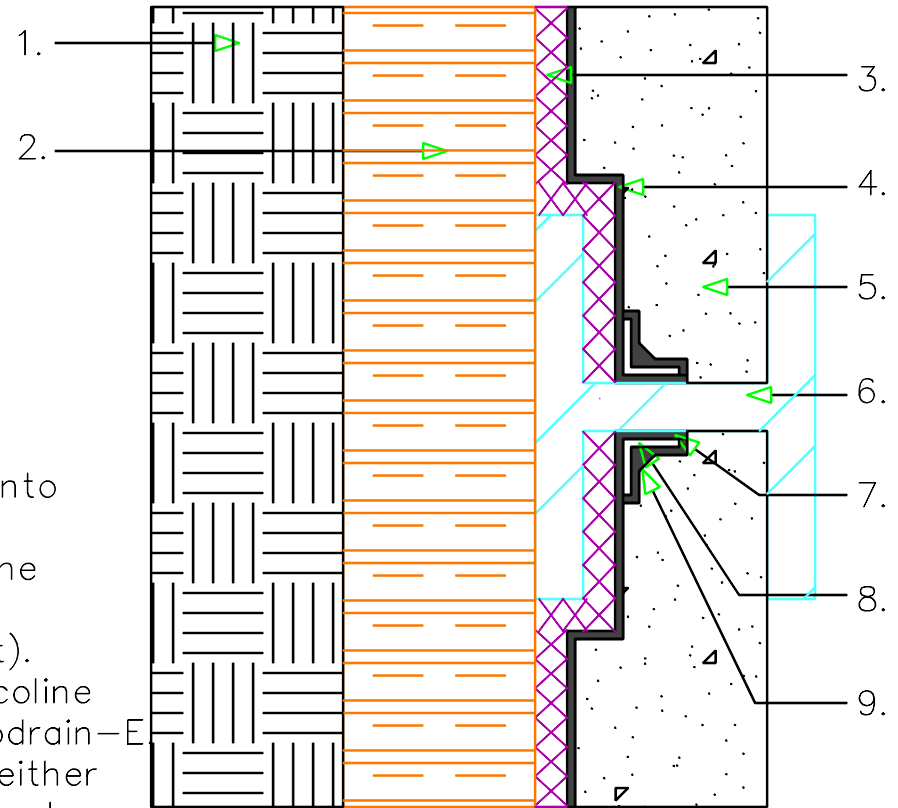


1. Soil
2. Lagging
3. Ecodrain-E
4. Ecoline-S
5. Shot crete Wall
6. Soldier Beam
7. Ecoline-R
8. Fabric Re-inforcement
9. Ecoline-S (45 degreecant.)

- A. Apply a base coat of Ecoline-S or Ecoline-R onto inside edge of soldier beam.
- B. Extend Ecodrain-E beyond the inside edge at the soldier beam a minimum of 3" and pass the Ecodrain-E (fabric side into the Ecoline product).
- C. Apply a second 30-mil coat of Ecoline-S or Ecoline-R onto the soldier beam and 6" onto the Ecodrain-E
- D. Embed a reinforcement fabric extending 3" on either side of the seam formed by the soldier beam and drainage composite.
- E. Apply a third coat of Ecoline-S or Ecoline-R onto the fabric insuring complete saturation.



LAGGING WALL DETAIL
INTERIOR
SOLDIER BEAM

eiproTM
Waterproofing Systems



LW-3