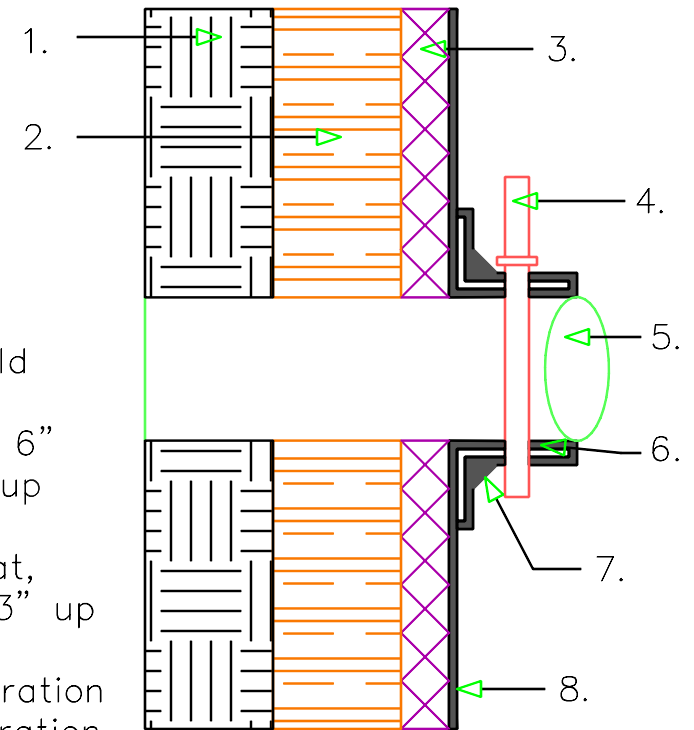


1. Soil
2. Lagging
3. Ecodrain-E
4. Nylon or Polypropylene cinch tie
5. Pipe
6. Ecoline-R
7. Ecoline-S (45 degree cant.)
8. Ecoline-S (60-mil)

- A. Trim the Ecodrain to within 1/8" of the penetration (should be as snug as possible).
- B. Apply a 30-mil base coat of Ecoline-S or Ecoline-R in a 6" radius on the Ecodrain-E, around the penetration and 6" up the penetrating object.
- C. Embed 6" polyester reinforcement fabric into the base coat, wrapping it around the penetration 3" onto the field and 3" up the penetration.
- D. Apply a minimum 60-mil coat around and onto the penetration while creating a 45 degree cant at the base of the penetration.
- E. Secure the membrane and reinforcement fabric with a nylon or polypropylene cinch tie.



LAGGING WALL
DETAIL
PENETRATION



LW-4