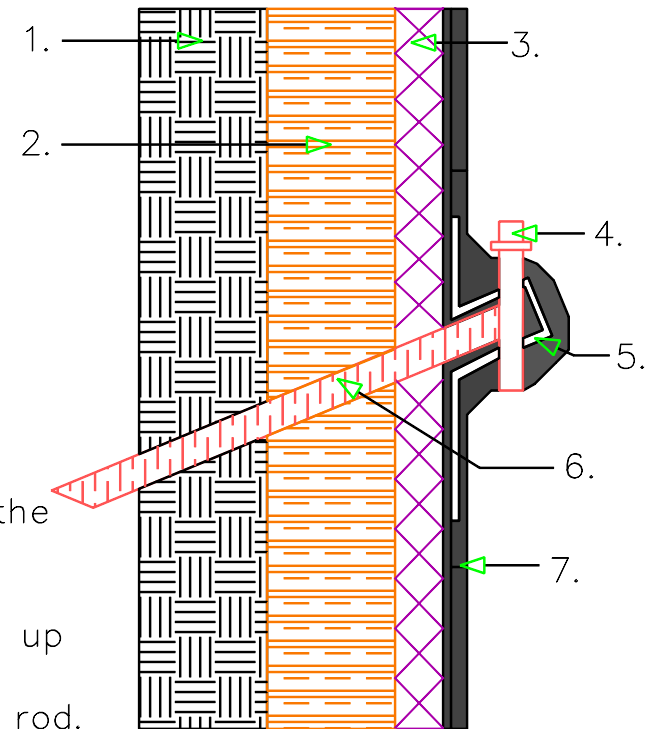


1. Soil
2. Soldier Beam
3. Ecodrain-E
4. Nylon or Polypropylene cinch tie
5. Reinforcement fabric
6. Tie Back Rod
7. Ecoline-S

- A. Trim the Ecodrain to within 1/8" of the tie back rod (should be as snug as possible).
- B. Apply a 30-mil base coat of Ecoline-S or Ecoline-R in a 6" radius on the Ecodrain-E around the tie back rod and over the object.
- C. Embed 6" polyester reinforcement fabric into the base coat, wrapping it around the tie back rod 3" onto the field and 3" up the tie back rod.
- D. Apply a minimum 60-mil coat around and onto the tie back rod.
- E. Secure the membrane and reinforcement fabric with a nylon or polypropylene cinch tie.



LAGGING WALL  
DETAIL  
TIE BACK

**eipro**™  
Waterproofing Systems



LW-5