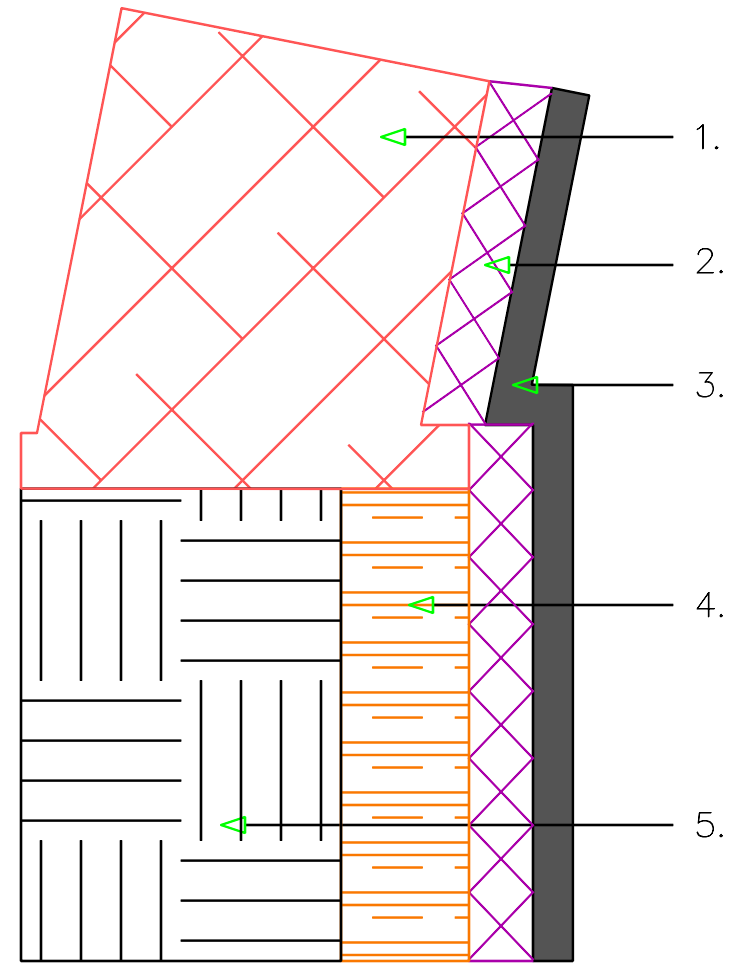


1. Existing Wall
2. Ecodrain-E
3. Ecoline-S
4. Shotcrete
5. Soil

- A. Attach Ecodrain-E over the Shotcrete wall extending up a minimum of 6" on the existing concrete wall. Above the anticipate top of shotcrete wall
- B. Apply 60-mil coat of Ecoline-S or Ecoline-R over the Ecodrain-E



EXISTING TO NEW  
WALL

**eipro**™  
Waterproofing Systems



LW-6