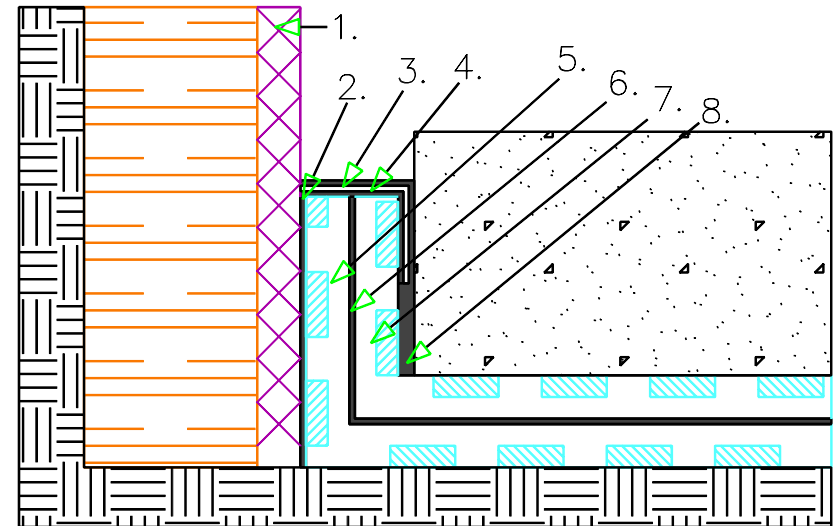


1. Ecodrain-E
2. Ecoline-S or Ecoline-R
3. Polyester re-inforcement fabric
4. Ecoline-S or Ecoline-R
5. Ecoshield-P (fabric side down)
6. Ecoline-S or Ecoline-R
7. Ecoshield-P (fabric side up)
8. Ecoshield-S or Ecoline-R

- A. Apply a 40-mil coat of Ecoline-S to the underside of the moisture barrier system.
- B. Press the moisture barrier into the back of the Ecodrain-E extending a minimum of 6" up the wall.
- C. Apply a second 40-mil coat of Ecoline-S, 4" on either side of the seam formed by the moisture barrier on the wall
- D. Embed polyester reinforcement fabric into the second coat of Ecoline-S.
- E. Apply a third 40-mil coat over this.



BLINDSIDE WALL
& BELOW SLAB

epro™
Waterproofing Systems



LW-7