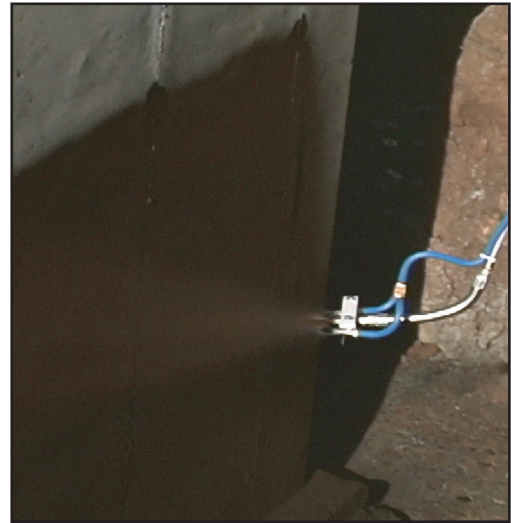


# ECOBASE Waterproofing Membrane

*Covers All The BASEment Needs When It Comes To Waterproofing*



## Engineered To Outperform All Other Waterproofing Membranes

- An extremely flexible waterproofing membrane to handle movement and minor cracking.
- A highly polymerized water-based emulsion to provide years of protection without breakdown.
- Exceptional bonding even on damp substrate and green concrete.
- Completely seamless thus preventing traditional seam failure of sheet goods.
- Excellent durability to provide resistance to backfill damage.
- For both vertical and horizontal surfaces.

ECOBASE Typical Cured Properties	TEST METHOD	UNIT
Initial Cure .....		10 minutes
Final Cure .....		24-48 hours
Tensile Strength .....	ASTM D 412-98 A .....	19 psi
Elongation .....	ASTM D 412-98 A .....	5,380%
Moisture Vapor Transmission .....	ASTM E 96-00-B .....	0.0366 gm/sq. ft./hr
Hydrostatic Water Test .....	ASTM D 751-00 .....	19 psi
Bonding .....	ASTM C 836-76 .....	11 psi
Degradation and Water Action Resistance .....	ASTM D 2939-94 .....	None
Low Temperature Flexibility .....	ASTM C 836-00 .....	>6.7° C (no breaking)
Resistance to Acids: .....	ASTM D 543	
Hydrochloric .....		10%
Sulfuric .....		10%

### Typical Uncured Properties

Specific Gravity .....	ASTM D 244 .....	1
Viscosity .....	ASTM D 1200 .....	>25 centipoise
PH .....		12.3
Flammability .....	ASTM D 3143 .....	500°F
Color .....		Brown to Black
Non-Toxic .....		No Solvents
Shelf Life .....		6 months

### Coverages:

Walls - good water protection (40-mil) .....	28 sq. ft./gal.
Walls - better water protection (55-60-mil) .....	19 sq. ft./gal.

**Packaging:** Available in bulk, totes (275 & 330 gal.) & drums (55 gal.)

**Endorsements:** ICC ESR 2463

**EPRO SERVICES**  
P.O. Box 347  
Derby, KS 67037 USA



**Phone: 800-882-1896**  
**316-262-2513**  
**Fax: 316-262-2529**  
**Web: www.eproserv.com**

# ECOBASE Specifications

## 1. PRODUCT NAME

ECOBASE

## 2. MANUFACTURER

EPRO SERVICES, INC.  
P.O. Box 347  
Derby, KS 67037  
PHONE: 800-882-1896  
FAX: 316-262-2529

## 3. PRODUCT DESCRIPTION

**Basic Use:** ECOBASE is designed to be a waterproofing barrier for vertical and light duty horizontal applications on both below grade and above grade surfaces. ECOBASE is to be applied with a unique self-contained sprayer to produce instantaneous, monolithic coating at accelerated rates. It may be used as a base coat for other water-based products.

**Composition:** ECOBASE is a water-based, high solids, highly polymer-modified asphalt emulsion, which exhibits elastomeric qualities to handle expansion and contraction movement, minor cracking and increased durability.

### Benefits:

- VOC compliant.
- Non-hazardous, non-toxic, and non-flammable.
- Efficient and effective application.
- Cost-effective.
- Non-leaching.
- Excellent waterproofing.

### Limitations:

- Should be applied to clean surfaces.
- Adjacent areas and surfaces should be protected from contact with the product.
- Exposure to UV
- Should be stored above 40° F.
- A test area should always be done to verify compatibility of substrate with product.
- Solvent-based products should not be applied over this product.

## 4. TECHNICAL DATA

**Properties:** See chart

**Coverages:** See chart

### • Specification Writer:

Contact EPRO Services before writing specifications on this project. Test information available upon request.

## 5. INSTALLATION

**Preparation:** Must include but not limited to:

- All surfaced should be free of loose materials and other contaminants. These should be removed prior to application by suitable methods.
- Repairs: Any cracks, spall or metal protrusion areas should be repaired by brush or trowel application of ECOLINE-T insuring penetration of materials in damaged or cracked area. Large cracks may also require a layer of fiberglass mesh or polyester mat being spanned over crack and ECOLINE-T applied over this to provide additional strength.
- A test should always be done prior to application using the same cleaning preparation and application procedures to be used on the project.

### Application:

- Should be applied in accordance with specific application guide specifications.
- ECOBASE is to be spray applied with catalyst water by appropriate equipment fitted with specific nozzles, which forms a monolithic water protection coating. Spray application produces an approximate 20-mil build on each pass of spray gun.

**Cleaning:** Clean all tools with kerosene and/or equivalent.

## 6. AVAILABILITY AND COST:

Contact the local distributor and/or Authorized Applicator for availability and cost.

## 7. WARRANTY

**Limited Warranty:** EPRO warrants this product to be free from defects. EPRO makes no other warranties with respect to this product, express or implied, including without limitation the implied warranties of MERCHANTABILITY OR FITNESS FOR PARTICULAR PURPOSE. EPRO's liability shall be limited in all events to supplying sufficient product to retreat the specific areas to which defective product has been applied. EPRO shall have no other liability, including liability for incidental or resultant damages, whether due to breach of warranty or negligence. This warranty may not be modified or extended by representatives of EPRO or its distributors.

## 8. MAINTENANCE:

No maintenance required.

## 9. TECHNICAL SERVICES AND INFORMATION:

Complete technical services and information are available from EPRO Services.

